



TECHNICAL ARTICLE SERIES

JJ-0776

Deflection Elbows in PVC Conveying Line Prevent Wear, Downtime at Palram



HAMMERTEK CORPORATION

USA:
2400 Emrick Boulevard, Bethlehem, PA 18020-8006
1 800 505 9665 1 610 814 2273 Fax: 1 610 814 0600
sales@hammertek.com hammertek.com

Deflection Elbows in PVC Conveying Line Prevent Wear, Downtime at Palram

KUTZTOWN, PA — Palram Americas, a maker of finished and semi-finished extruded thermoplastic sheet products and panel systems experienced repeated failure of sweep elbows in pneumatic conveying lines due to abrasive wear. Project Manager Joe Obrien says PVC resin striking the inside walls of the system's 4 ft (1.2 m) long, 14-gauge stainless steel sweeps created pinholes that required patching or replacement after just five months of service.

The plant operates 24/7, so replacing failed elbows incurred two- to four-hour shutdowns per incident, as well as parts and labor costs.

"We considered installing thicker-walled sweeps, and other companies offered to reinforce the affected sections of the line," Obrien said, but after doing some research, Palram installed HammerTek deflection elbows on its two lines conveying PVC from silos to dosing systems. Each line required a pair of new 90-degree elbows, with two at the top of a 16 ft (4.8 m) vertical run, and the two at the start of a 60 to 80 ft (18.3 to 24.4 m) horizontal run to the dosing system. He notes that the pressure differential in the pneumatic conveying system was not adversely affected by the switch to the deflection elbows, so no adjustments were required to other system parameters.

HammerTek's Smart Elbow® design features a spherical vortex chamber protruding slightly beyond the desired pathway. When material transitions into the elbow, part of the flow is diverted into the vortex chamber, where it forms a loosely packed ball of material that rotates slowly in the direction of the airstream that powers it, gently deflecting incoming particles around the bend without impacting the elbow wall.

The deflection elbows cost more than standard stainless-steel sweeps, Obrien acknowledges, but they have already paid for themselves. After two years of use, he says the Smart Elbow units have been maintenance-free.

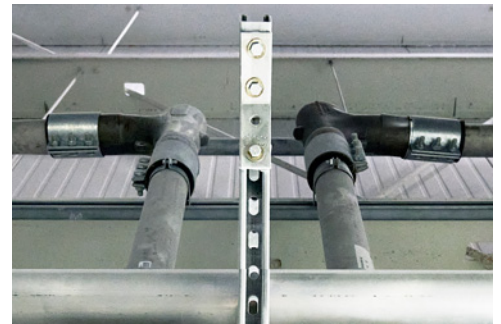
"It's a success story for us," Obrien says, adding that Palram will look to replace any sweeps on its polycarbonate lines if they also show signs of wear.

In business for more than 50 years, Palram, a subsidiary of Israel-based Palram Industries Ltd., says it "continually pushes the limits of thermoplastic technology to solve emerging market challenges." Today, the company's PVC and polycarbonate products are used in countless applications worldwide — from stadiums and airports to agricultural facilities, commercial buildings, and private residences.

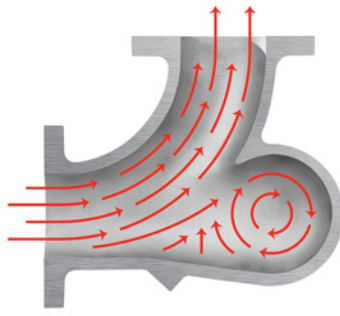
Palram Americas
9735 Commerce Circle
Arcadia West Industrial Park
Kutztown, PA 19530
610-285-9918
ContactUs.USA@palram.com
www.palram.com



Deflection elbows at Palram Americas stand up to abrasive PVC resins, while sweep elbows handle less abrasive polycarbonate.



Palram Americas installed Smart Elbow® deflection elbows following abrasion and failure of conventional sweep elbows in PVC conveying lines.



A spherical vortex chamber protruding from the deflection elbow causes a loose ball of material to rotate in the same direction as the airstream that powers it, deflecting particles around the bend without impacting or wearing the elbow wall.



PVC resin abraded conventional sweep elbows, requiring patching or replacement after five months.



Palram Americas produces PVC and polycarbonate products for applications from stadiums and airports to agricultural facilities, commercial buildings, and private residences.